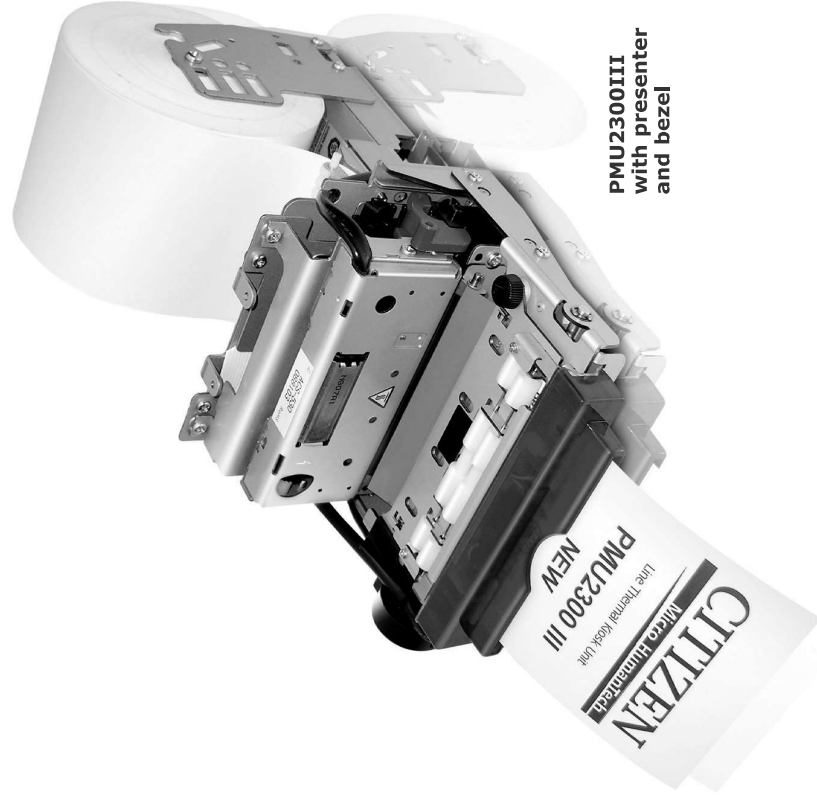


Compact category The compact size kiosk printer with all features you need



PMU2300III
with presenter
and bezel

Presenter & Bezel

The PMU2300III comes with a bezel only or with presenter and bezel. Both makes it easy to integrate the printer into kiosk systems. The presenter impresses with an exhaust and retract speed of 350mm/sec. Equipped with four monochrome white LEDs the optional bezel indicates the status of the printer.

Different Paper Holders

The kiosk printer can operate with 2 different paper holders for paperrolls with a diameter up to 102mm and 204mm respectively.

Wider operating temperature

Operating in temperatures between -10°C up to 60°C the PMU2300III is suitable for indoor as well as for outdoor applications.

2D Barcodes

Beside standard barcodes the PMU2300III also prints PDF417 and QR code.

PMU2300III

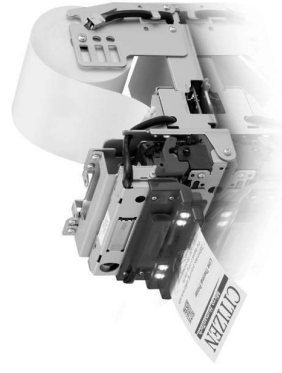
POS

Applications

- Kiosk
- Weigh scales
- POS
- Industrial machine
- ATM



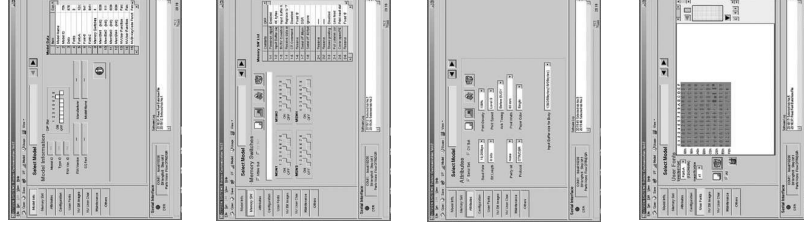
Bezel



PMU2300III without presenter

- Presenter incl. retract function (option)
- Small foot print and compact design
- 150mm/sec high-speed printing
- 3 inch model (PMU2300) available
- Cutter (full/partial)
- Wider operation temperature range
-10°C ~ 60°C
- Easy recovery from paper jam and easy head cleaning owing to removable head design
- Serial/Parallel/USB/ types available
- 8 dots/mm resolution
- 2 different holder units (Ø 102 or 203 mm)
- Paper thickness up to 0.087mm
- Driver: Win 2000/XP/VISTA/
- 2003 Server
- Bezel (option)

Customization Software



Specifications

Model	PMU2300
Printing method	Line thermal dot printing
Dot pitch	8 dots/mm (203 dpi)
Printing speed	Max.: 150mm/sec (1,200 dot lines/sec)
Number of columns	Font A: 48 columns Font B: 64 columns Font C: 72 columns
	Kanji Font A: 24 columns Kanji Font C: 36 columns
Character size (WxH)	Font A: 1.50 x 3.00mm (12 x 24 dots) Font B: 1.13 x 3.00mm (9 x 24 dots) / Font C: 1.00 x 2.00mm (8 x 16 dots) Kanji Font A: 3.00 x 3.00mm (24 x 24 dots) / Kanji Font C: 2.00 x 2.00mm (16 x 16 dots) (As the space inside character font is included, actual character is smaller than that in the above table)
Character table	Alphanumeric, International character set (12 characters x 16 countries) Code page 437, 850, 852, 857, 858, 860, 863, 864, 865, 866 WPC1252, Katakana, Thai Code 18, Kanji (JIS Level 1, Level 2), Kana, JIS C 6226-1983
User memory	256 K bytes (User-defined characters and created logo can be registered.)
Barcode type	UPC-A/E, JAN(EAN), PDF417, QR code, ITF, Code39, Code128, CODABAR, Code93
Line spacing	4.23mm (1/6 inch); can be set by a command
Paper width	80mm
Thickness	0,060 - 0,087mm
Presenter	Min ticket length: 75mm, Max ticket length: 120mm
Bezel (Snout)	Equipped with four monochromatic white LEDs
Interface	Serial (RS-232C compliant), Parallel (IEEE12184 compliant) or USB
Input buffer	4K bytes or 45K bytes
Input power	Input voltage: DC 24V± 7% / Current consumption: 1.9A (peak 6A) / Power consumption: 100W
Dimensions (WxDxH) & Weight	PMU2300IISN: W113xH98xD182, (0,9 KG) PMU2300IIISB: W113xH98xD208, (1,0 KG) PMU2300IIIPN: W113xH98xD234, (1,2 KG) PMU2300IIIPB: W113xH98xD260, (1,2 KG)
Operating environment	-10°C ~ 60°C, 35 ~ 85%RH
Storage environment	-25°C ~ 65°C, 10 ~ 90%RH
Reliability	Thermal head: 100,000,000 pulses or 100 km / Auto cutter: 1,000,000 cuts
EMC and safety standards	UL, C-UL, FCC class A, TUV, GS, CE marking

Type Classification

PMU2300III P B RS U M1
 1) 2) 3) 4) 5) 6)

PHU-102 S
 1) 2) 3)

6) No Mark: No Sensor
 M1: Black Mark Sensor (left)
 M2: Black Mark Sensor (right)

5) Destination
 U: US/Europe/Other
 J: Japan

4) Interface
 PA: Parallel
 RS: Serial
 UB: USB

3) Bezel
 N: No Bezel
 B: Bezel equipped

2) Special mechanism
 S: Standard
 P: Standard + Presenter

1) Model type
 PMU2300III

3) Paper insertion direction
 S: Side insertion
 T: Top insertion

2) Maximum paper diameter
 102: Ø 102mm
 203: Ø 203mm